

The Unofficial White Clay Creek and Middle Run Trail Map

This map combines information for Middle Run County Park, White Clay Creek S.P. and Redd Park into a single map to help park visitors explore the 35-plus mile combined trail system.

The most current version of this map is available for download at www.kencox.net

Please give back to the trails. Trail work parties are organized by TrailSpinners every 3rd Saturday of the month.

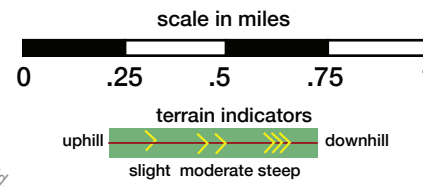


TrailSpinners on Facebook

Map Version 2.6.2 - 10/16/2018

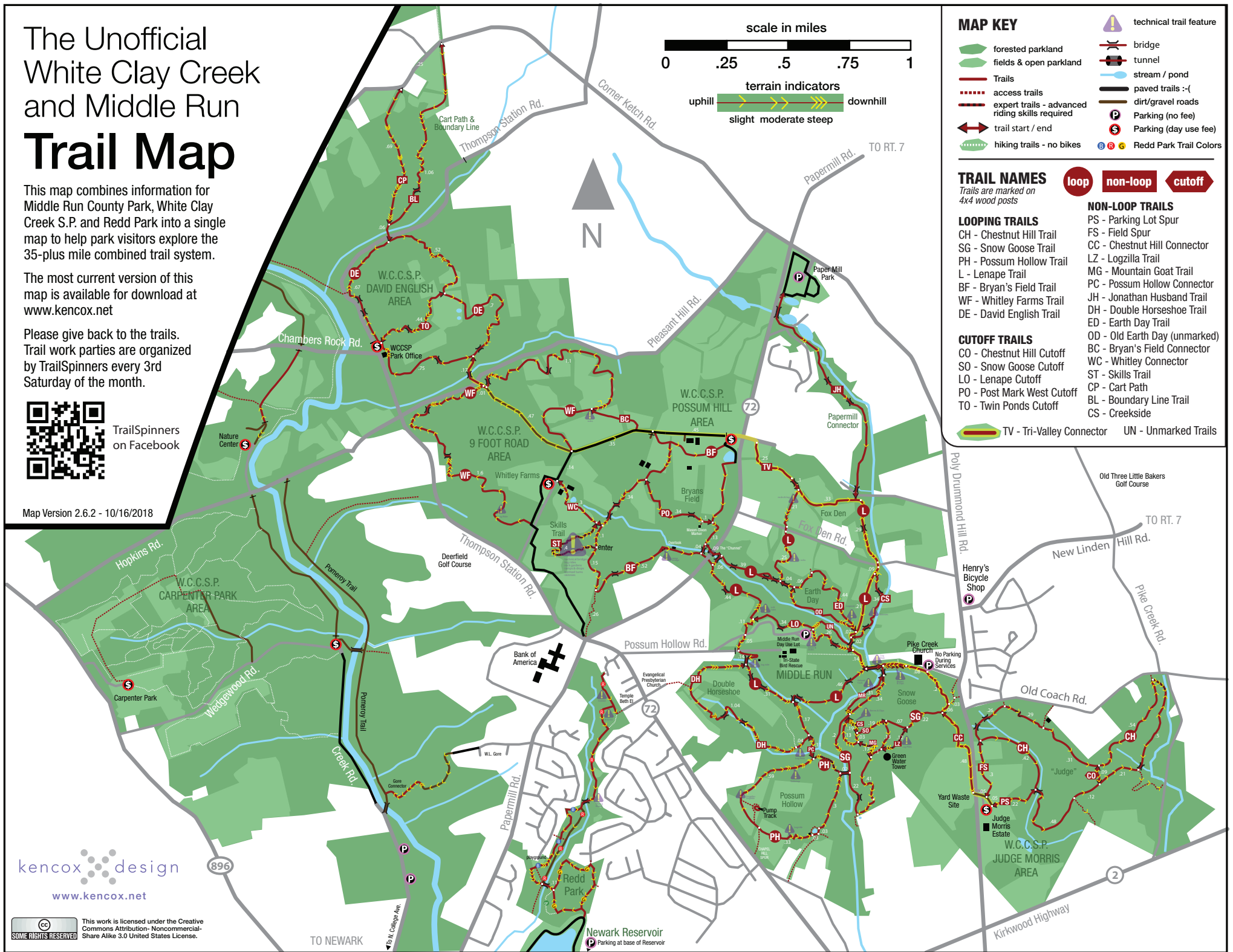
kencox design
www.kencox.net

This work is licensed under the Creative Commons Attribution-NonCommercial-Share Alike 3.0 United States License.



- MAP KEY**
- forested parkland
 - fields & open parkland
 - Trails
 - access trails
 - expert trails - advanced riding skills required
 - hiking trails - no bikes
 - technical trail feature
 - bridge
 - tunnel
 - stream / pond
 - paved trails -(
 - dirt/gravel roads
 - Parking (no fee)
 - Parking (day use fee)
 - Redd Park Trail Colors

- TRAIL NAMES**
Trails are marked on 4x4 wood posts
- loop non-loop cutoff
- LOOPING TRAILS**
- CH - Chestnut Hill Trail
 - SG - Snow Goose Trail
 - PH - Possum Hollow Trail
 - L - Lenape Trail
 - BF - Bryan's Field Trail
 - WF - Whitley Farms Trail
 - DE - David English Trail
- CUTOFF TRAILS**
- CO - Chestnut Hill Cutoff
 - SO - Snow Goose Cutoff
 - LO - Lenape Cutoff
 - PO - Post Park West Cutoff
 - TV - Tri-Valley Connector
 - UN - Unmarked Trails
- NON-LOOP TRAILS**
- PS - Parking Lot Spur
 - FS - Field Spur
 - CC - Chestnut Hill Connector
 - LZ - Logzilla Trail
 - MG - Mountain Goat Trail
 - PC - Possum Hollow Connector
 - JH - Jonathan Husband Trail
 - DH - Double Horseshoe Trail
 - ED - Earth Day Trail
 - OD - Old Earth Day (unmarked)
 - BC - Bryan's Field Connector
 - WC - Whitley Connector
 - ST - Skills Trail
 - CP - Cart Path
 - BL - Boundary Line Trail
 - CS - Creekside



TO NEWARK

Newark Reservoir
Parking at base of Reservoir